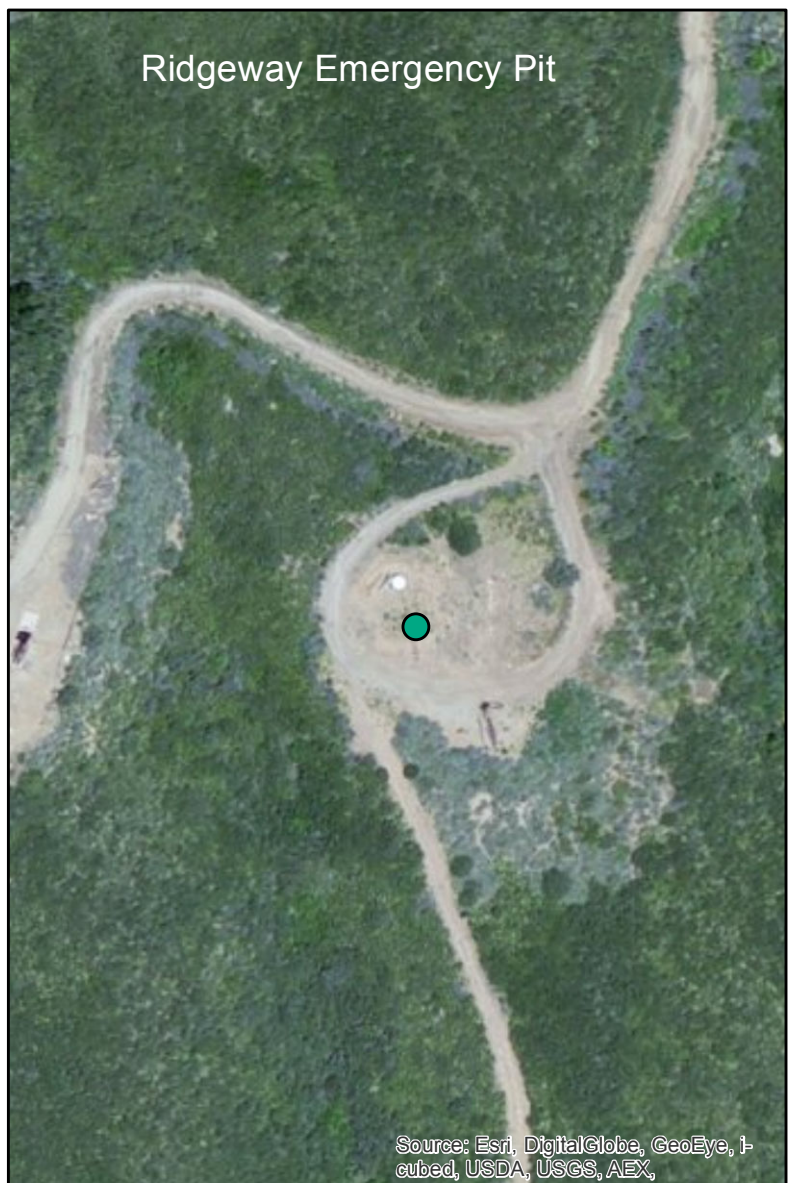


Ridgeway Unlined Sump- Active



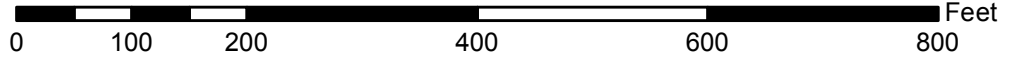
Source: Esri, DigitalGlobe, GeoEye, i-cubed, USDA, USGS, AEX,

Ridgeway Emergency Pit

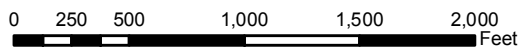


Source: Esri, DigitalGlobe, GeoEye, i-cubed, USDA, USGS, AEX,

1:2,000



● Ridgeway Corporation operated sump



Source: Esri, DigitalGlobe, GeoEye, i-cubed, USDA, USGS, AEX, Getmapping, Aerogrid, IGN, IGP, swisstopo, and the GIS User Community